



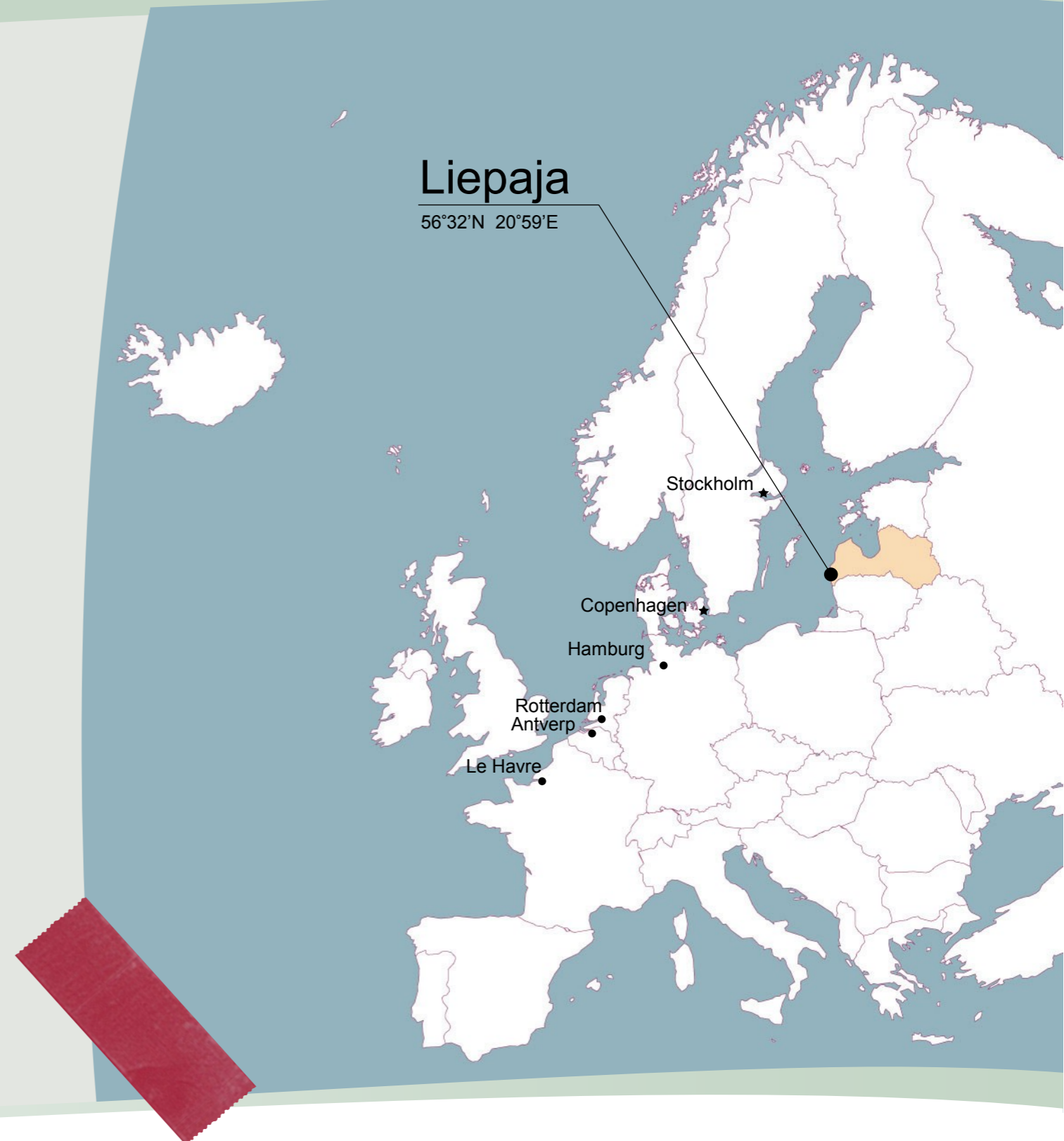
**«Liepaja – an effective industrial and regional transit center»**



# The Port of Liepaja: geographical location

Distance from Liepaja to major  
European ports:

- Stockholm - 216 n.m / 16 h
- Copenhagen - 325 n.m. / 26 h
- Hamburg - 493 n.m. / 36 h
- Antwerp - 1 024 n.m. / 80 h
- London - 1 025 n.m. / 70 h
- Rotterdam - 1 173 n.m. / 72 h
- Le Havre - 1 231 n.m. / 85 h



Liepaja

56°32'N 20°59'E

Stockholm

Copenhagen

Hamburg

Rotterdam  
Antwerp

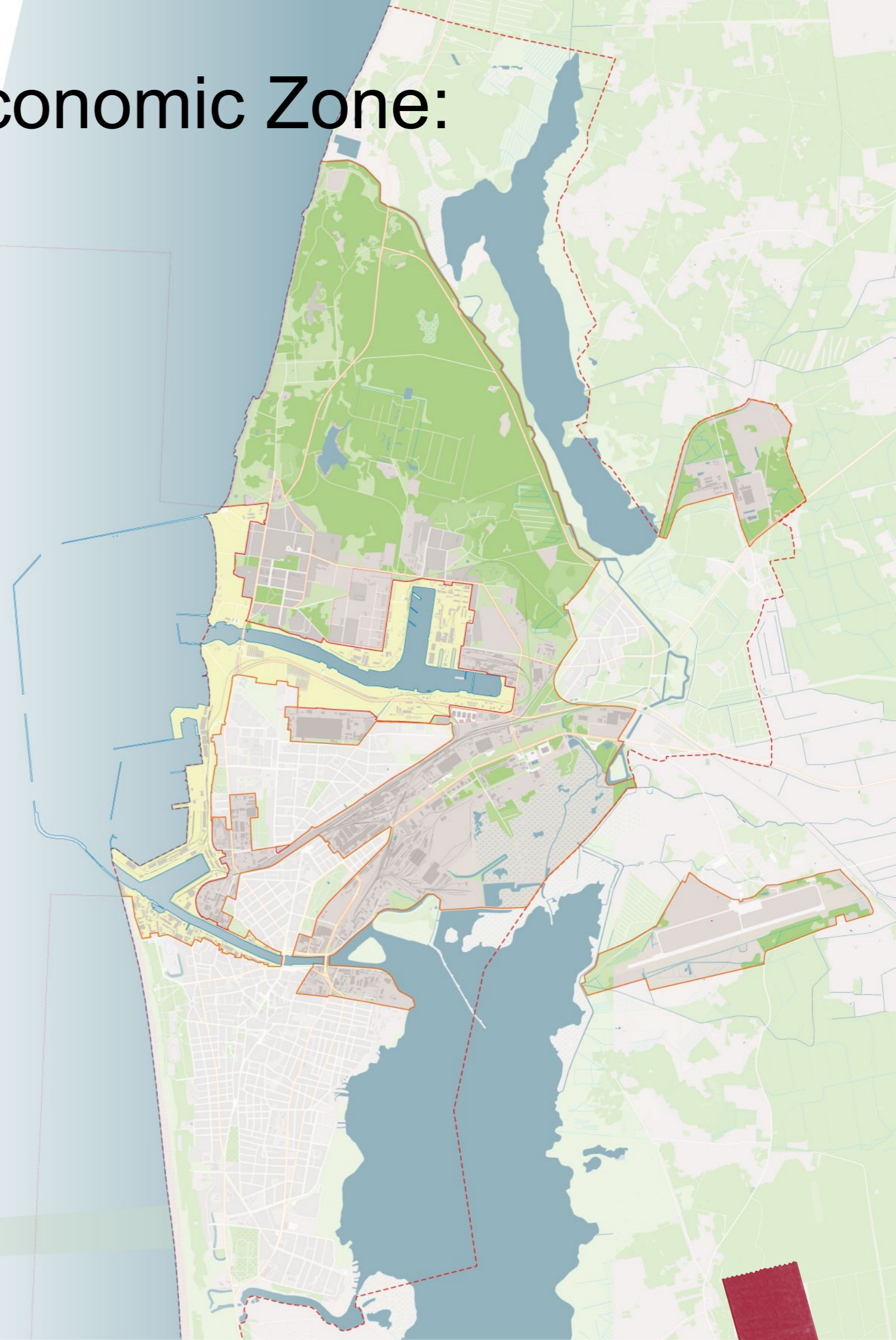
Le Havre



# Liepaja Special Economic Zone: territory

Liepaja Special Economic Zone was established in 1997 and occupies virtually all the non-residential territory of the city, comprising 3 979 ha or about 65% of the total territory. The main territories of the Liepaja SEZ are:

- Port with total area - 1 182 ha,
- Industrial area of the city - 543 ha,
- International airport - 251 ha,
- Former military base “Karosta” - 1 763 ha.





# The Port of Liepāja: general overview

The Port of Liepāja is multifunctional and non-freezing port on the coast of the Baltic Sea, as well as the 3rd Latvia`s largest port.

In the territory of the port are 16 cargo handling terminals, 17 ship agencies, freight forwarders, customs brokers and other companies, providing a diversity of value added activities and full range of cargo handling and storage services.

Regular RO-PAX service over route Liepāja – Travemünde (Germany) is provided.

In addition, there are 2 ship building and repair companies and 2 fish processing companies.





# The Port of Liepaja: general information

Port territory - 1 182 ha

- Dry land - 372 ha
- Water basin - 810 ha

Number of berths, total - 80

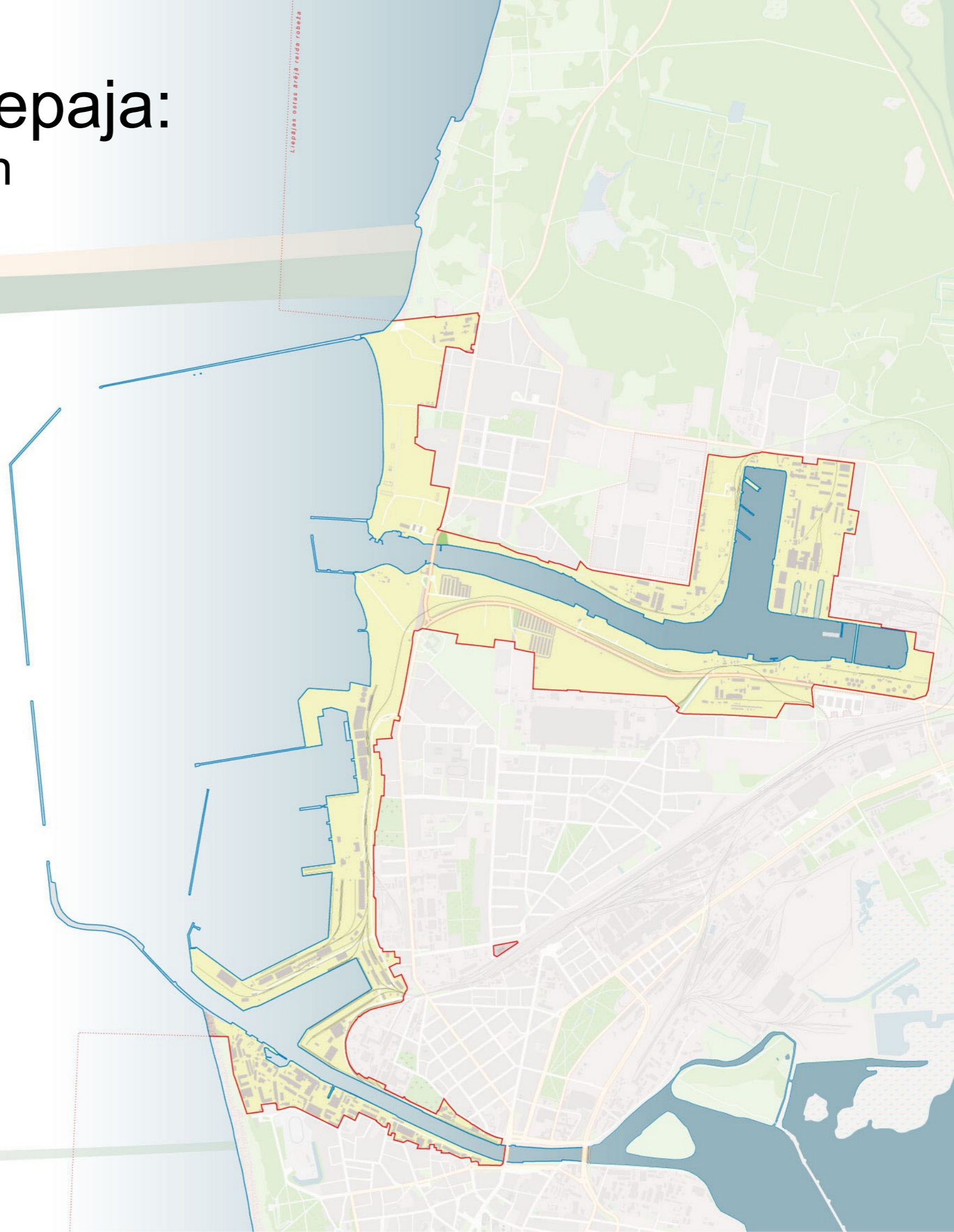
Length of berths, total - 10 000 m

Maximum draught of ships - 10.8 m

Maximum breadth of ships - 35 m

Maximum length of ships - 240 m

Cargo handling capacity - 9.2  
million tons per year





# The Port of Liepāja: cargo terminals



## Dry bulk cargoes:

- agricultural products (grain, seeds, fodder)
- building materials (cement)
- biofuel (wood pellets, wood chips)



## General cargoes:

- RO – RO cargoes
- timber
- non-ferrous metal and ferrous metal



## Liquid cargoes:

- crude oil
- oil products
- chemical cargoes

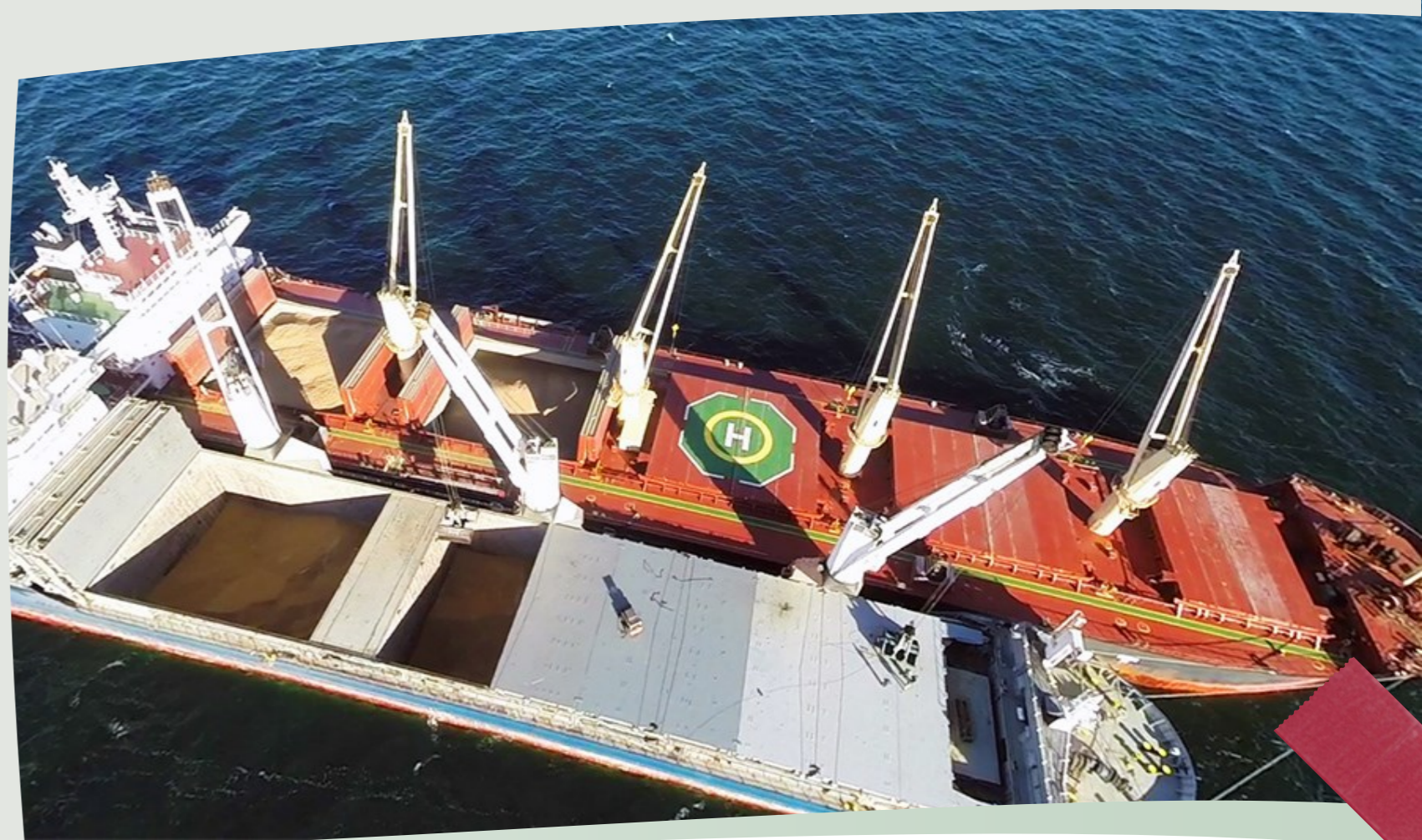


# The Port of Liepaja: new solutions for cargo handling

In 2015, “Liepaja Bulk Terminal” LSEZ Ltd. did an experiment with cargo handling in open sea. Specially equipped vessel and suitable for this procedure was used for the loading process to achieve maximum draught of 13 m.

The aim of the solution was to help serving bigger panamax type vessels.

It was a success and now it is used for grain and coal cargoes.





# The Port of Liepaja: Liepaja Marina

Liepaja Marina is still located in its historical place - at the eastern part of Commercial canal - and have guests from all over the world.

Incoming yachts are provided with berthing place, water and electricity supply, guarding of berth. For the convenience of guests, there are provided sanitary facilities – WC, shower, laundry. Yacht center provides 24 hour a day agency services.

Yacht center is certified by Blue flag – world`s most popular eco certificate.







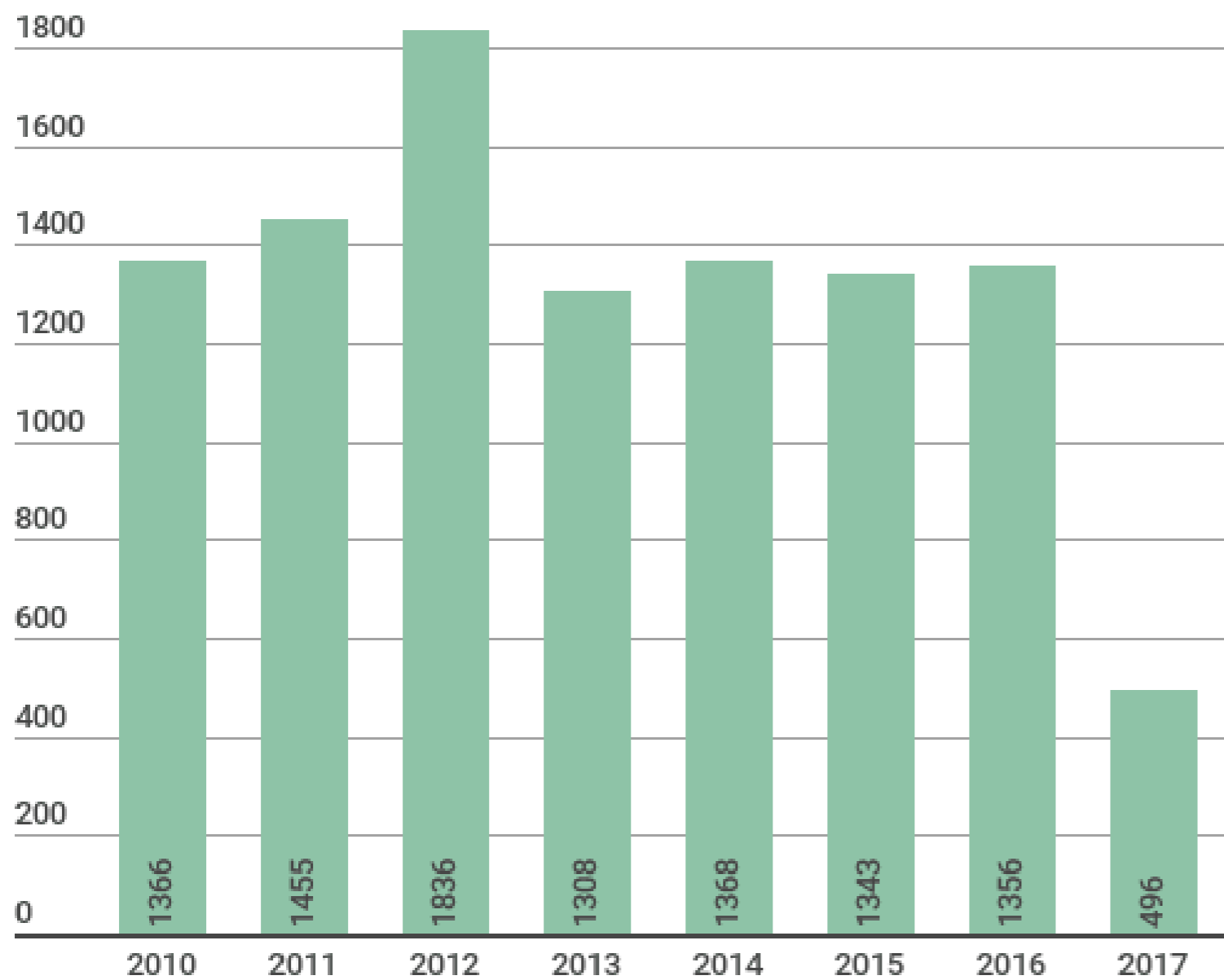
# Port of Liepāja: pilots in the port

- 12 + 1 pilots
- 4 shifts, 3 pilots in each
- Work regime – 24 hour shift, 72 hours off
- Average age of pilots – 44 years
- Each pilot during the shift services around 3 vessels (24 vessels per month, 280 vessels per year)





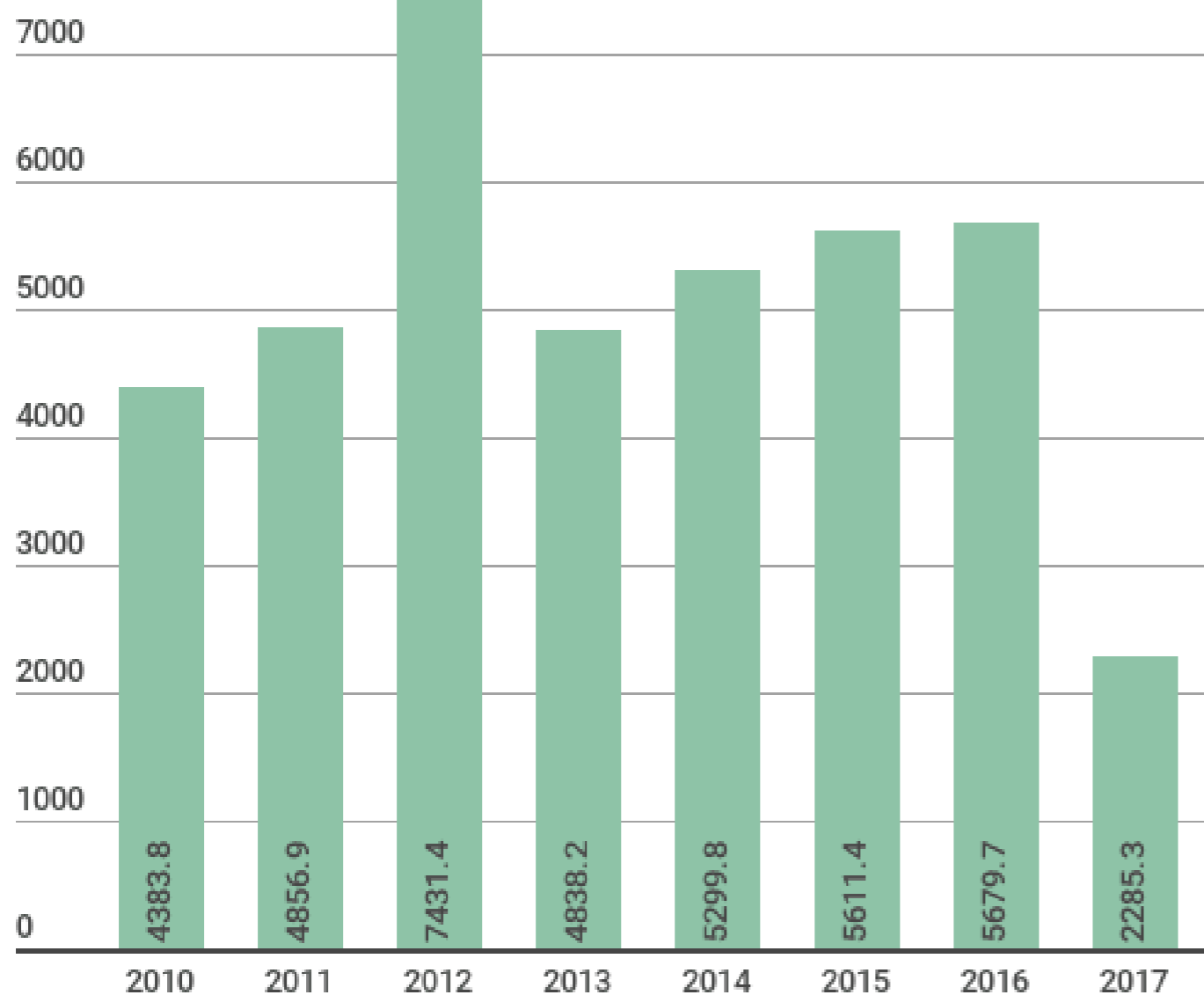
# The Port of Liepaja: number of vessels per year



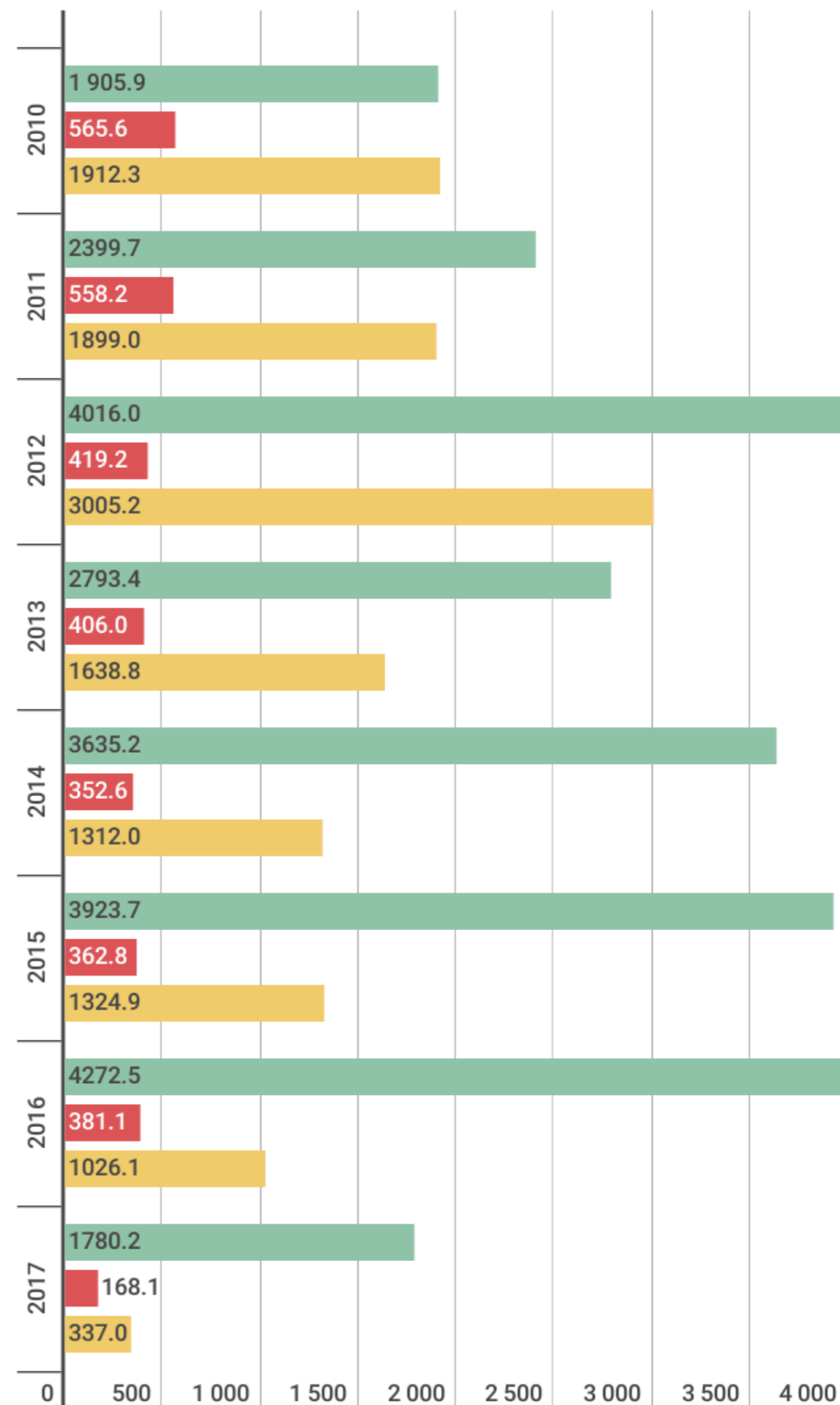


# The Port of Liepaja

## cargo turnover and structure



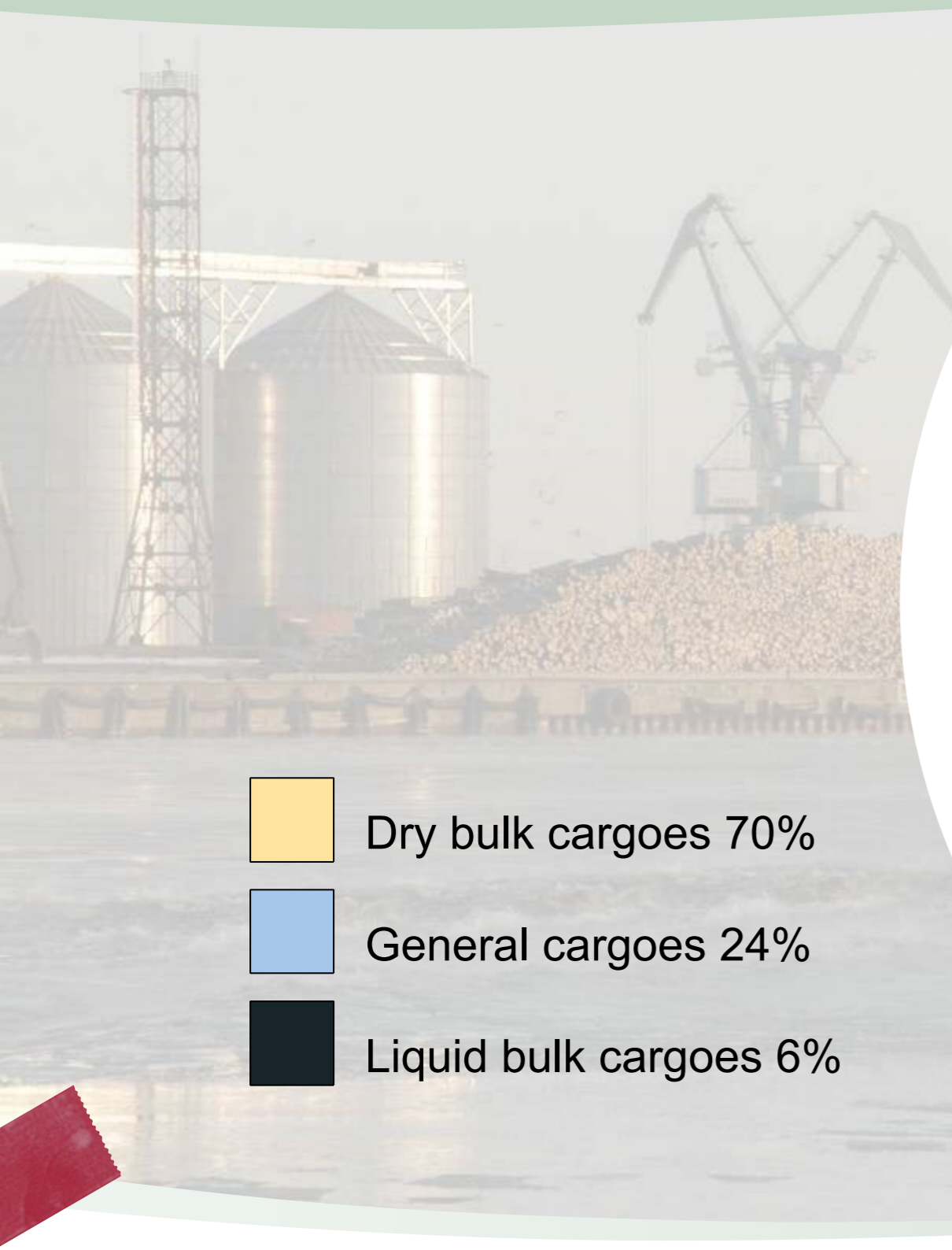
Cargoes in total per year, thous. tons



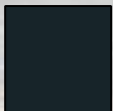


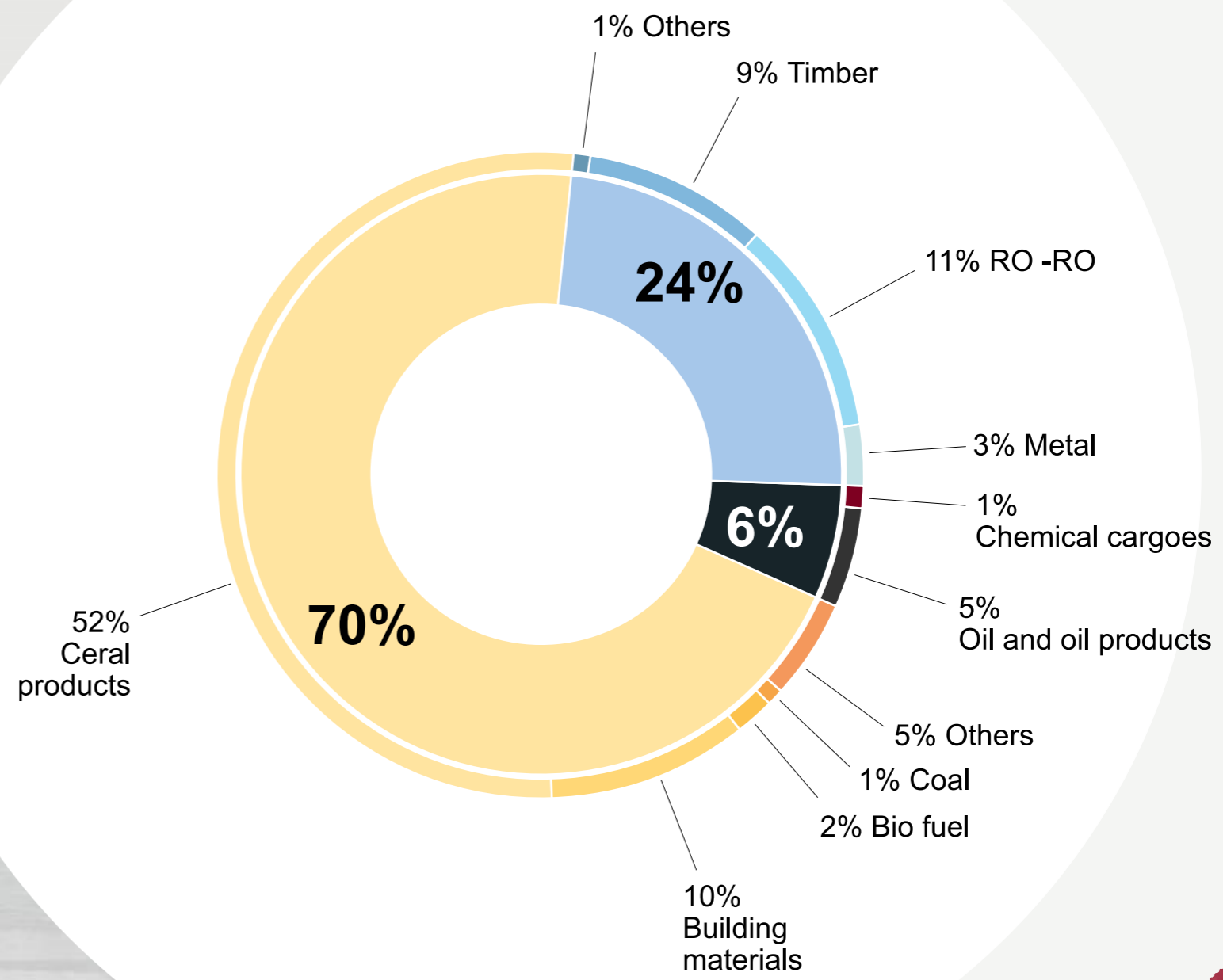
● dry bulk cargoes ● liquid cargoes ● general cargoes

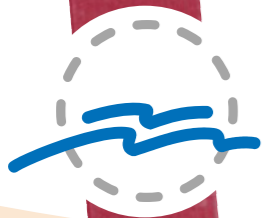


# The Port of Liepaja: cargo structure in 2016



-  Dry bulk cargoes 70%
-  General cargoes 24%
-  Liquid bulk cargoes 6%





# Thank You for attention!



**LIEPAJA  
SPECIAL ECONOMIC ZONE  
AUTHORITY**

4 Feniksa Street, Liepaja, LV-3401 Latvia



+371 6342765



+371 63480252



authority@lsez.lv



www.liepaja-sez.lv



www.facebook.com/LiepajaSEZ



@LSEZ\_authority



@liepajas\_sez