



Newcastle



London



Hull

UK Association of Deep Sea Pilotage Authorities

Captain Dennis Robinson,
Trinity House, Hull

ADSPA Licenced Pilots at January 31st 2016

	2016	2015
Trinity House, London	29	30
Trinity House, Hull	8	9
Trinity House, Newcastle	7	7
Total UK Licensed DSPs	44	46

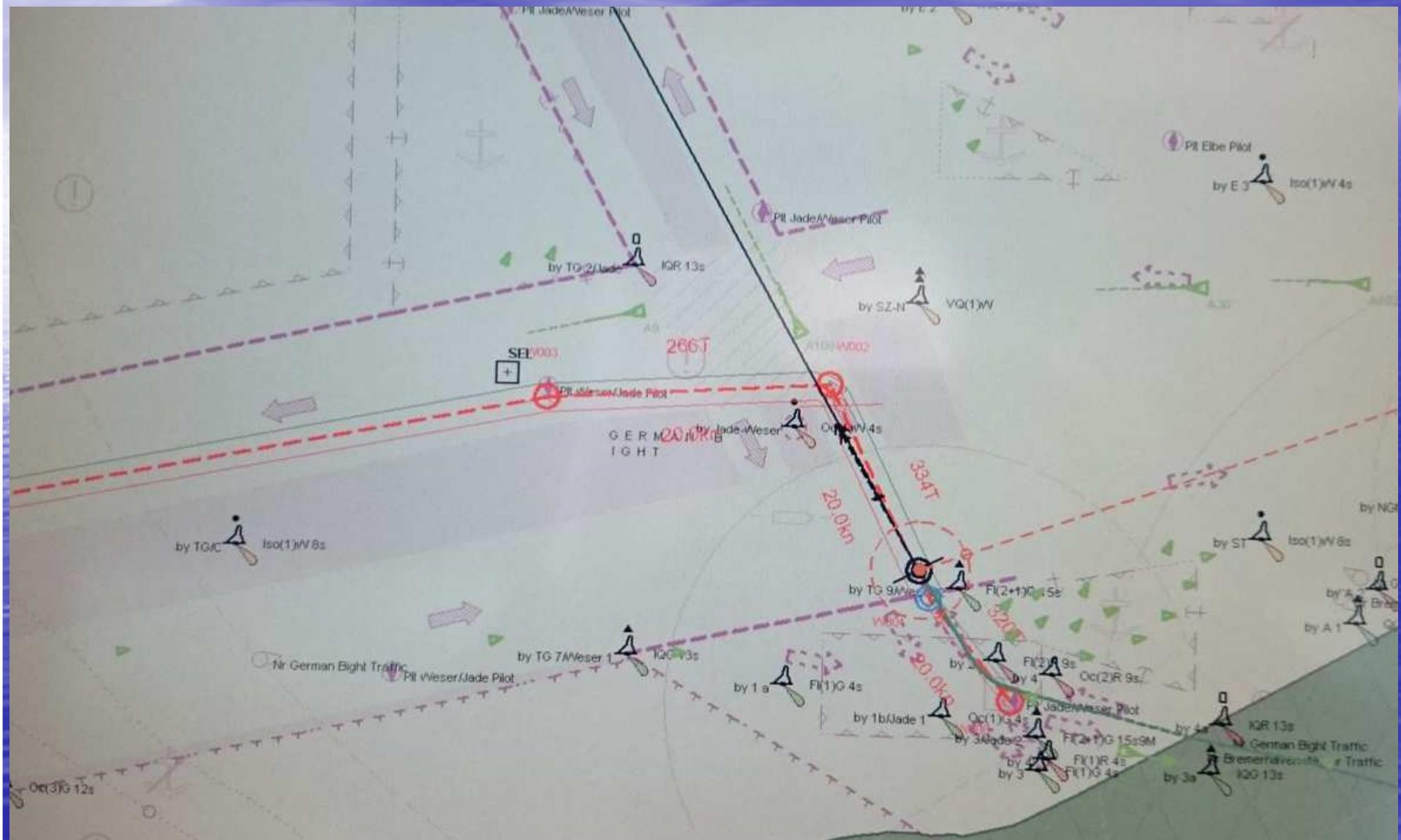
We continue to work with our enhanced examination and revalidation processes, as described to you last year

Reliance on technology continues to
be a focus of our Deep Sea Pilot
Revalidation interviews

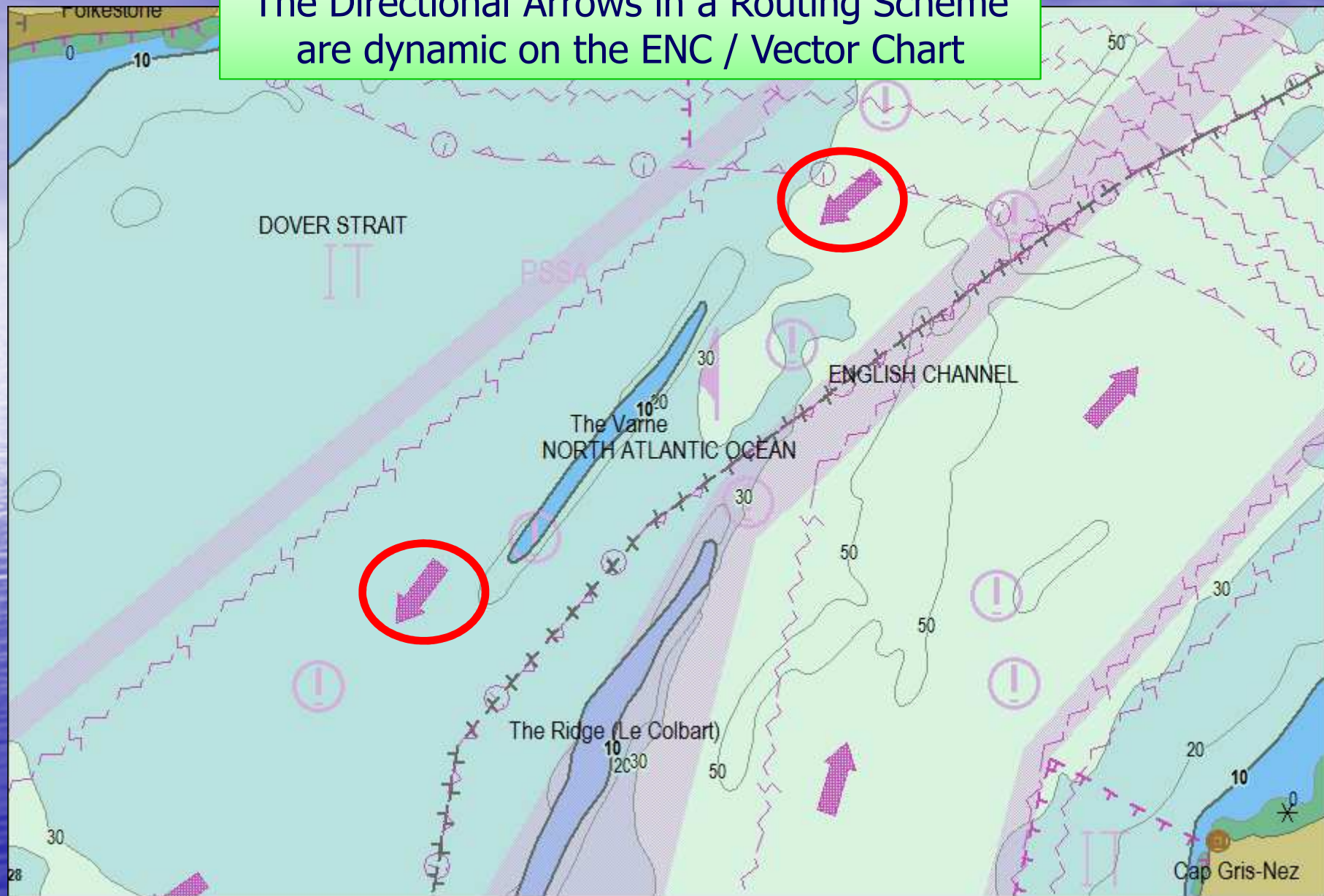


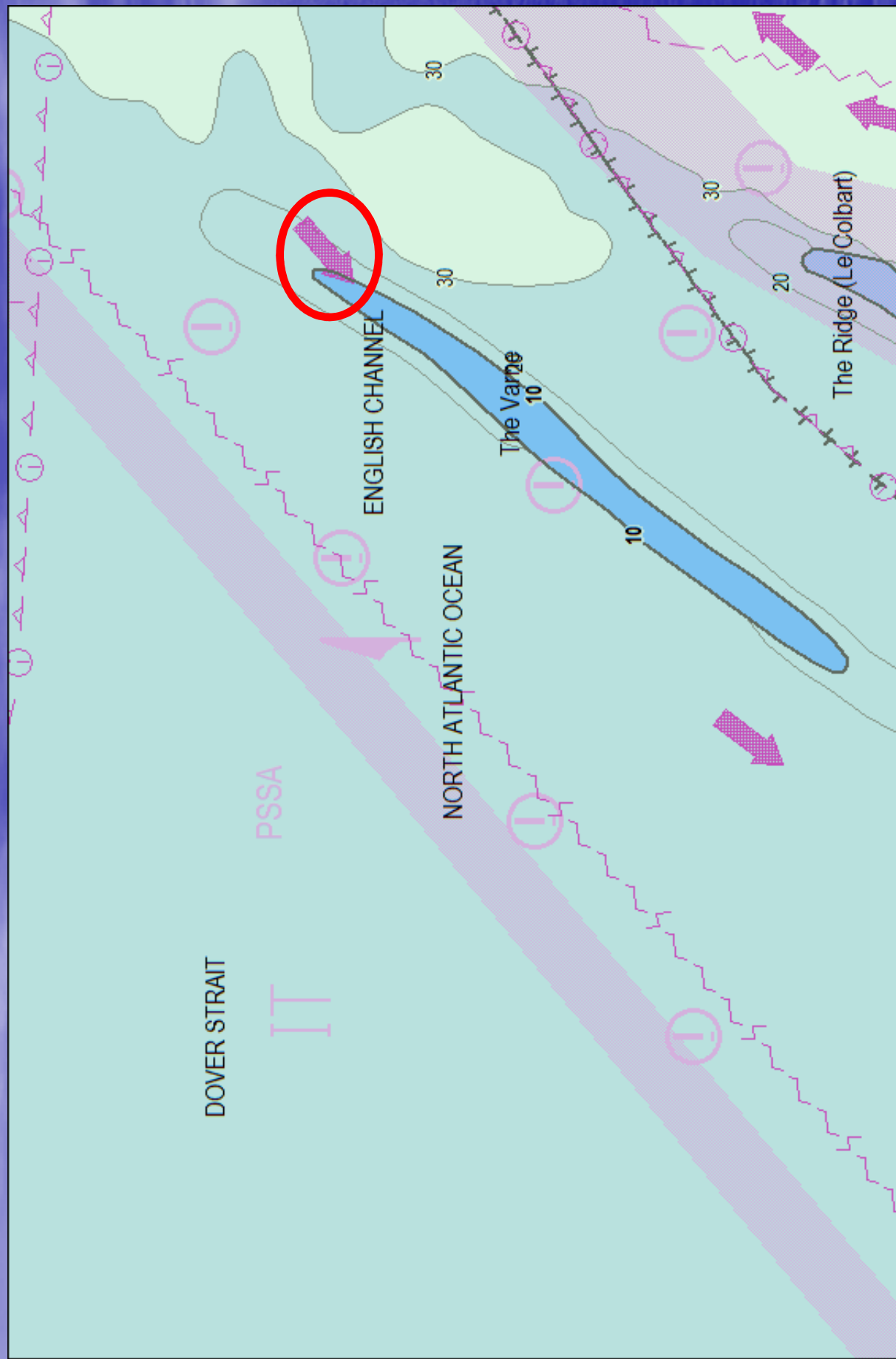
What's missing ?

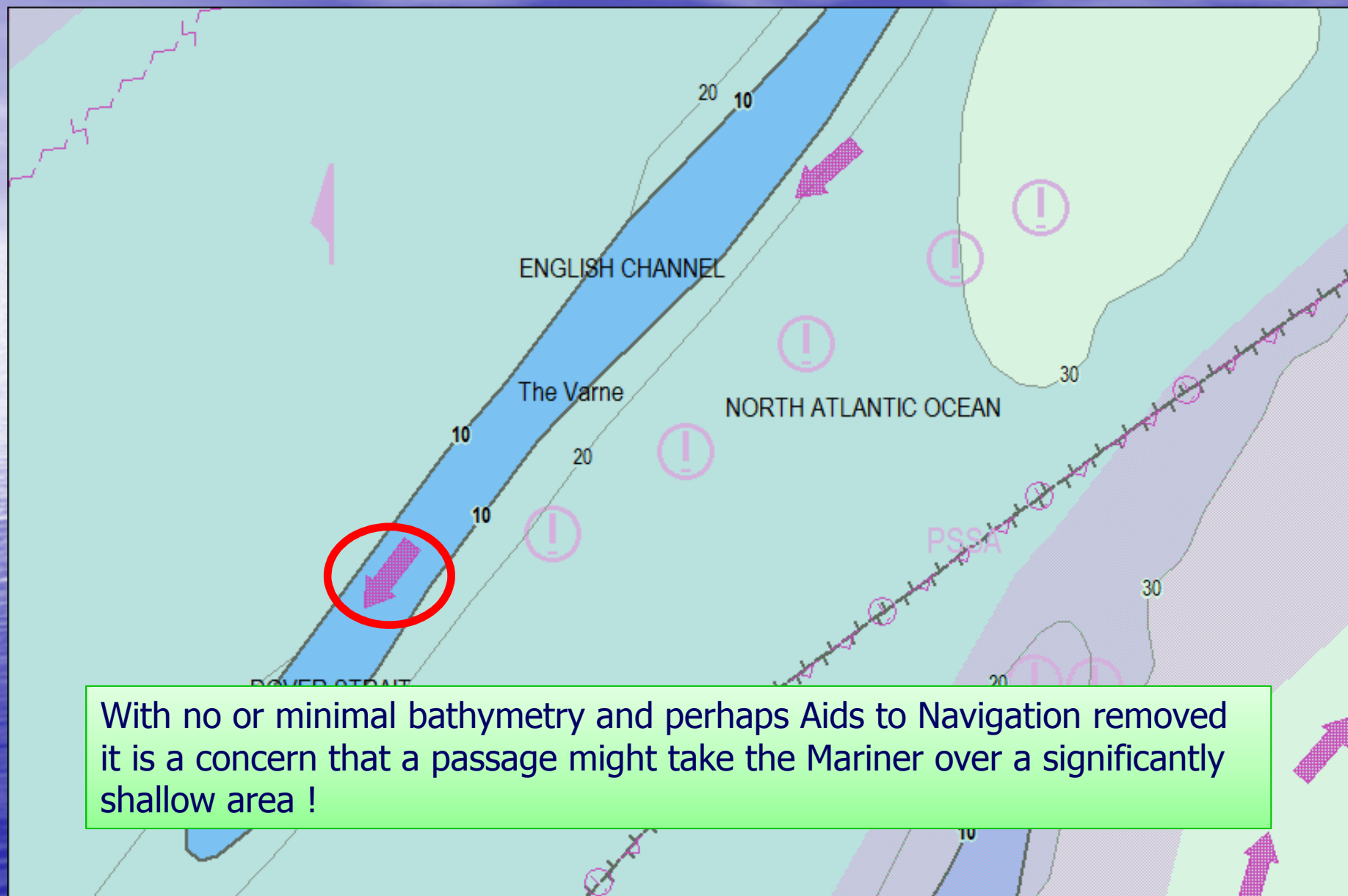
NO Bathymetry



The Directional Arrows in a Routing Scheme
are dynamic on the ENC / Vector Chart







With no or minimal bathymetry and perhaps Aids to Navigation removed it is a concern that a passage might take the Mariner over a significantly shallow area !

SOURCES

British Government Surveys

- a 2009-2011 Full sea floor coverage
- b 2006-2007 Full sea floor coverage
- c 2000-2003 1:25 000
- d 1993-1998 1:25 000

French Port Authority Surveys

- j 1977-2002 1:2000-1:7500

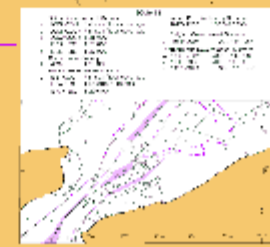
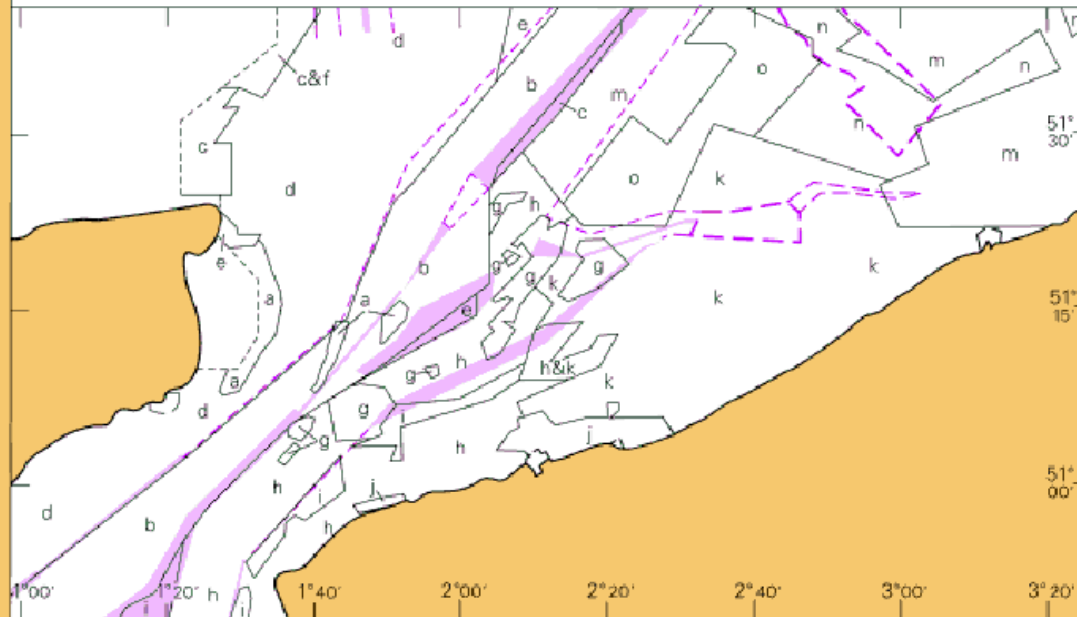
Belgian Government Surveys

- k 1968-2004 1:10 000-1:40 000

The source data diagram!

The soundings are electronic – they must be correct

- g 1997-2001 Full sea floor coverage
- h 1974-1995 1:50 000-1:10 000
- i 1973-1982 1:20 000



No Go Areas ??



ALRS Pilot information

HAMMOND DEEP SEA PILOTS

NOTES:

- (1) Licensed Deep Sea Pilots available for all N European and UK port calls.
- (2) Also available for vessels transiting the English Channel and North Sea to Baltic Sea (Skagen).
- (3) Pilots can board or land at any port within this area.

CONTACT DETAILS:

Call: Brixham Pilots
VHF Channel: Ch **09** 16; 09
Telephone: +44(0)1304 248324
Fax: +44(0)1304 240374
E-mail: pilotage@georgehammond.plc.uk
Website: www.georgehammond.plc.uk

HOURS: H24

PROCEDURE:

- (1) **Notice of ETA:** Vessels should send ETA 48h in advance to the Pilot Station advising and updating ETA Brixham and port(s) of destination.
- (2) Vessels should contact Brixham Pilots on VHF Ch 09, 2h before arrival.
- (3) **Deep Sea Pilots board** as follows:
 - (a) Vessels with a draught more than 18m: 4 n miles due E of Berry Head
 - (b) Other vessels: In position [50°25'00N 3°25'70W](#)

December 2013, concerning the "Recommendation on the use of adequately qualified Deep Sea Pilots in the North Sea, English Channel and Skagerrak".

- (2) Attention is drawn to this regulation which recommends making use only of those Pilots in possession of a Deep Sea Pilot's card.

COMPETENT AUTHORITIES:

- (1) The United Kingdom Marine Guidance Note MGN 506(M) encourages Masters and Officers to use only the services of properly qualified Deep Sea Pilots.
- (2) Masters should always satisfy themselves as to the credentials of Deep Sea Pilots offering their services; such Pilots should be suitably qualified by a Competent Authority or who have an equivalent certificate issued by another North Sea coastal state.
- (3) Details of such Competent Authorities are listed under CONTACT DETAILS.

We are planning to approach the United Kingdom Hydrographic Office (UKHO) to discuss improvements to the ALRS Deep Sea Pilot sections

DEEP SEA AND COASTAL PILOTS

NOTES:

- (1) Licensed Deep Sea Pilots available for all N European and UK port calls.
- (2) Also available for vessels transiting the English Channel and North Sea to Baltic Sea
- (3) Pilots can board or land at any port within this area.

CONTACT DETAILS:

Call: Brixham Pilots
VHF Channel: Ch **09** 16; 09
Telephone: +44(0)1474 814444
Fax: +44(0)1474 814661
E-mail: seapilots@dscp.net
Website: www.dscp.net

HOURS: H24

PROCEDURE:

- (1) **Notice of ETA:** Vessels should send ETA 48h in advance to the Pilot Station advising and updating ETA Brixham and port(s) of destination.
- (2) Vessels should contact Brixham Pilots on VHF Ch 09, 2h before arrival.
- (3) **Deep Sea Pilots board** as follows:
 - (a) Vessels with a draught more than 18m: 4 n miles due E of Berry Head
 - (b) Other vessels: In position [50°25'00N 3°25'70W](#)

Conclusions:

- **We believe that the help and advice Pilots , both Harbour and Deep Sea, give is a significant Risk Control Measure which we must try to promote and exploit.**
- **Technology can provide for excellent improvements to overall operations – it can also stand in the way of sound seamanlike decisions.**
- **Support for appropriate changes to the ALRS - please**
- **We are keen to share our example of current issues, both positive and negative**
-

Thank you

Any questions?